



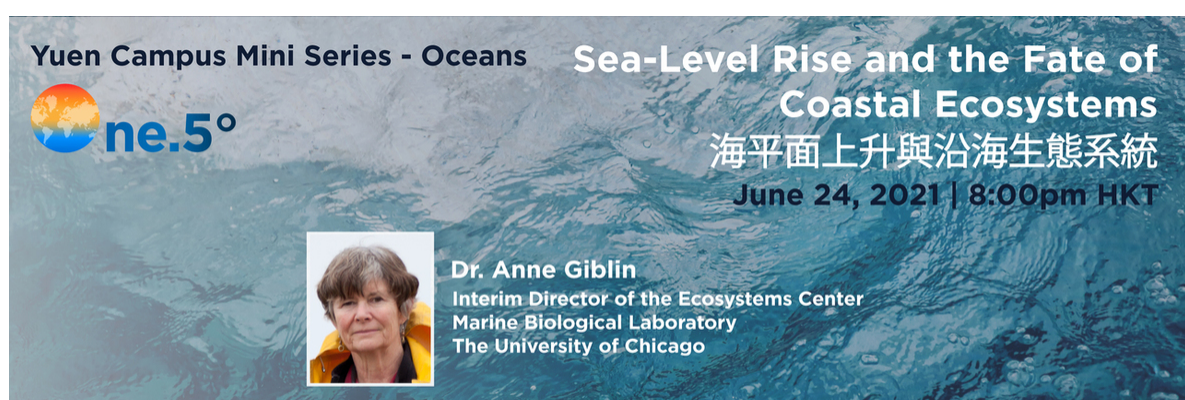
The Hong Kong Jockey Club University of Chicago Academic Complex
The University of Chicago Francis and Rose Yuen Campus in Hong Kong

Subscribe E-News

June 2021, Issue 9

View online version [here](#).

Sea-Level Rise and the Fate of Coastal Ecosystems (Jun 24)



Dr. Anne Giblin will discuss the current projections for sea-level rise over the next century and what impact high rates of sea-level rise could have on coastal ecosystems. The talk will focus on Atlantic salt marshes and mangroves, highlighting the tremendous impact that the invasion of *Spartina alterniflora* is having on coastal ecosystems in the Pacific.

Anne Giblin is the Interim Director of the Ecosystems Center at the Marine Biological Laboratory (MBL). She is also the lead Principal Investigator for the Plum Island Ecosystems Long-Term Ecological Research site, a large integrated watershed, estuarine and salt marsh site in the Northeastern US.

Learn more about MBL's work on oceans and climate change through these mini-series episodes of One.5.

Watch LIVE on Yuen Campus [Facebook](#), [Youtube](#) and [website](#).

[Register](#) on Zoom to join Q&A and access the recording.

REGISTER NOW

Responses to China's Rise in Southern Asia (Jun 28)



The rise of China has led to a diverse range of responses in the crescent of countries from Pakistan through the Philippines. Some regimes and publics have become more favorable toward China, others have turned increasingly hostile, and yet others seek advantages in being pursued by China, the US, India, and other large powers. Understanding these responses is crucial for making sense of the possible outcomes of geopolitical and geo-economic competition and cooperation in Asia.

In this presentation, **Dr. Paul Staniland** will present an overview of trends in public opinion toward China and the US across South and Southeast Asia, examine specific countries' political debates about navigating these politics, and discuss trends in actual foreign policy choices.

REGISTER NOW

The Hong Kong Jockey Club University of Chicago Academic Complex
The University of Chicago Francis and Rose Yuen Campus in Hong Kong

168 Victoria Road, Mount Davis, Hong Kong

hk@uchicago.edu | <https://www.uchicago.hk/>

Share this email:



[Manage](#) your preferences | [Opt out](#) using TrueRemove™

Got this as a forward? [Sign up](#) to receive our future emails.

View this email [online](#).

168 Victoria Road,
Mount Davis, | Hong Kong

This email was sent to .

To continue receiving our emails, add us to your address book.

emma